



OVERVIEW OF CTPP 2000

OTHER CENSUS ISSUES

Ed J Christopher
Transportation Industry Analyst
Bureau of Transportation Statistics
400 Seventh Street S.W.
Washington D.C. 20590

202-366-0412

berwyned@mcs.com
edc@bts.gov

Midwest Transportation Planning Conference

“Connecting America to the Heartland”

May 17, 2001



CTPP Working Group

- **U.S. DOT**
 - FHWA (*Elaine Murakami*)
 - BTS (*Ed Christopher*)
 - FTA (*Sarah Clements*)
- **Census Bureau**
 - Migration Division (*Phil Salopek*)
 - Geography Division (*Jamie Rosenson*)
- **AASHTO** (*Debbie Buchacz*)
- **MPOs**
- **States**
- **TRB Subcommittee on Census Data**
- **Special Staff** (*Nandu Srinivasan*)



What is the CTPP?

The Census Transportation Planning Package is a set of special tabulations from the decennial census designed for transportation planners.



Overview

- **Relies on Census "long form"**
- **CTPP Questions on "long form"**
 - place of work--street, city, county, zip
 - mode to work--including work at home
 - work trip vehicle occupancy
 - departure time
 - travel time
 - vehicles available in household
- **Tabulations by Three Areas**
 - residence (home location)
 - work place
 - flows between home and work
- **Summary Geography**
 - MPO TAZ (or tract/block group)
 - State TAZ (or tract/block group)
 - Census Place, County and State



2000 Highlights

- Same Question Content as 1990**
- New State TAZ Summaries**
- Tabs to Address Emerging Issues**
 - welfare to work
 - environmental justice
 - age, race, disability
- Standard Planning Tabs**
- Custom Tabs (on demand)**
- Improved Coordination**
 - website
 - list serve
 - status report (newsletter)
 - database of states and MPOs
 - single phone number (202-366-5000)
- Project Goals**
 - speedier delivery
 - better employer coding
 - improved delivery mechanism



Timeline

- **TAZ Definition Complete (June 2000)**
- **Work-Up Complete (June 2000)**
- **CTPP Content-Tables (Winter 2000)**

- **Disclosure Review Board Approval (Summer 2001)**

- **AASHTO Contract Signed (Summer 2001)**

- **State TAZs (Summer 2001)**

- **Data Access System (Fall 2001)**

- **OutReach Program Elements (Ongoing)**

- **CTPP Delivery ???**



CTPP Timeline

- **Residents Data
(December 2002)**
- **Work Place Tabs
(April 2003)**
- **Flow Data
(June 2003)**



Timeline -- Other Products

- State Population Counts (Dec. 1999)**
- Urbanized Area Boundary Notice (March 28, 2001)**
- Small Area Population --PL 94-171 (April 1, 2001)**
- SF1--Summary File 1 (Summer 2001)**
- SF3--Summary File 3 (Summer 2002)**
- Public Use Microdata Sample (1 percent 2002) (5 percent 2003)**



Public Use Micro Samples PUMS

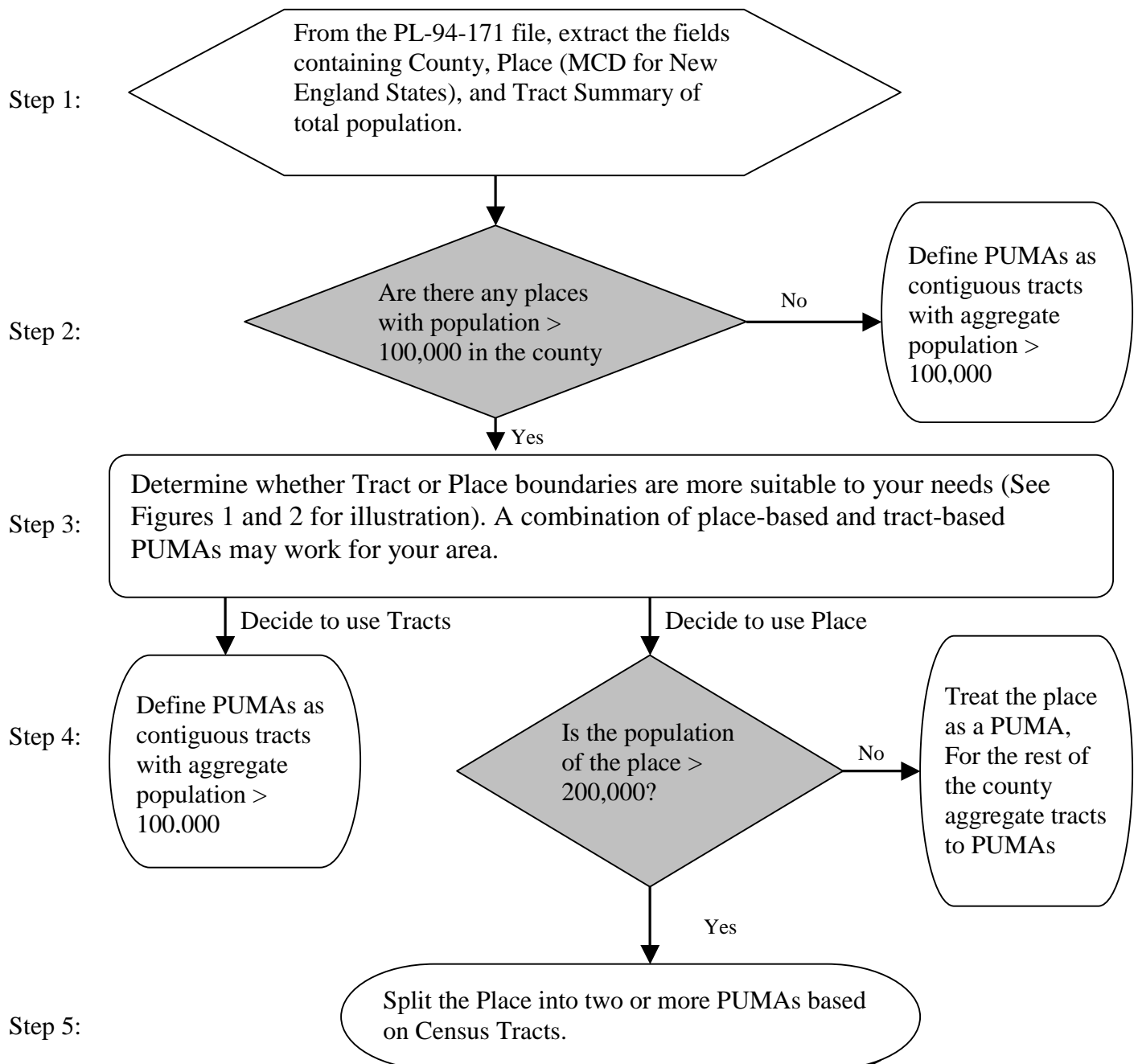
- **What is it ?**
 - 1 Percent Sample (400,000)**
 - 5 Percent Sample (100,000)**
- **Why is it Important?**
 - Model Building**
 - Research**
 - Special Studies**
- **What Can I do?**
 - Have a Say in the Creation**
of the Data Zones (PUMAs)
- **How Do I do It?**
 - Contact Your State Data Center**
 - Let the CTPP Working Group Know**
 - Be Assertive!!!**

A Transportation Perspective on defining 5 percent PUMAs in large metropolitan areas.

Nandu Srinivasan , Ed Christopher, and Elaine Murakami
May 7, 2001

We hope that most, if not all large MPOs will be working with their State Data Center to define PUMAs. We wrote this process to begin the discussion of issues that may arise as you begin to think about where the PUMA boundaries should be. The Census Bureau guidelines for PUMA definition are available at the TRB Census Subcommittee website at:
<http://www.mcs.com/~berwyned/census/articles/pumaguidelines.pdf>.

This procedure may be used for all counties that have a population of at least 100,000. First, examine county populations for all the counties in your state. If the population in a county is between 100,000 and 200,000, then that county should probably be its own PUMA. For counties with population greater than 200,000, follow steps 1 through 5 below. Each PUMA **must** have at least 100,000 population.



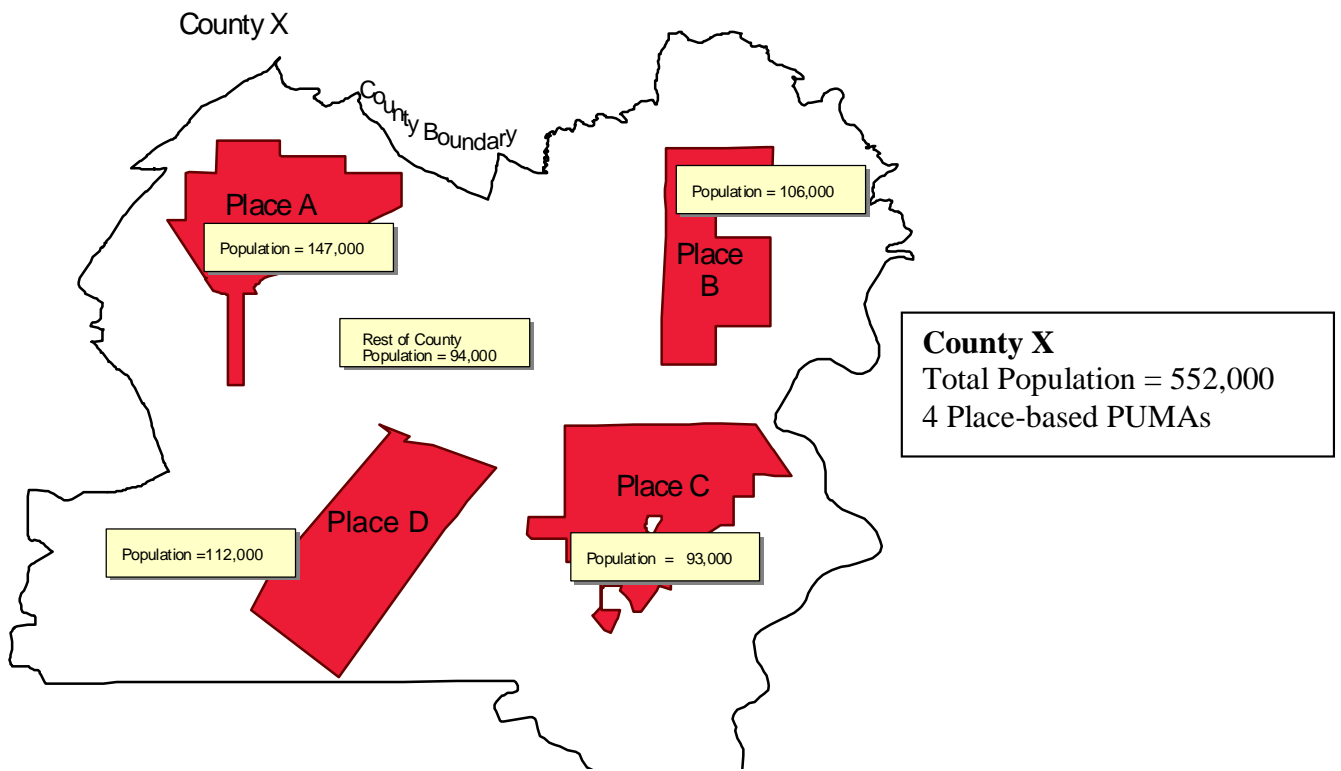


Figure 1: Illustration of Place-based PUMAs for County X.

County X has a total population of 552,000. Places A, B, and D can be their own PUMA, going by the Census Bureau guidelines. Place C will need to be combined with the rest of the county to form a 4th PUMA.

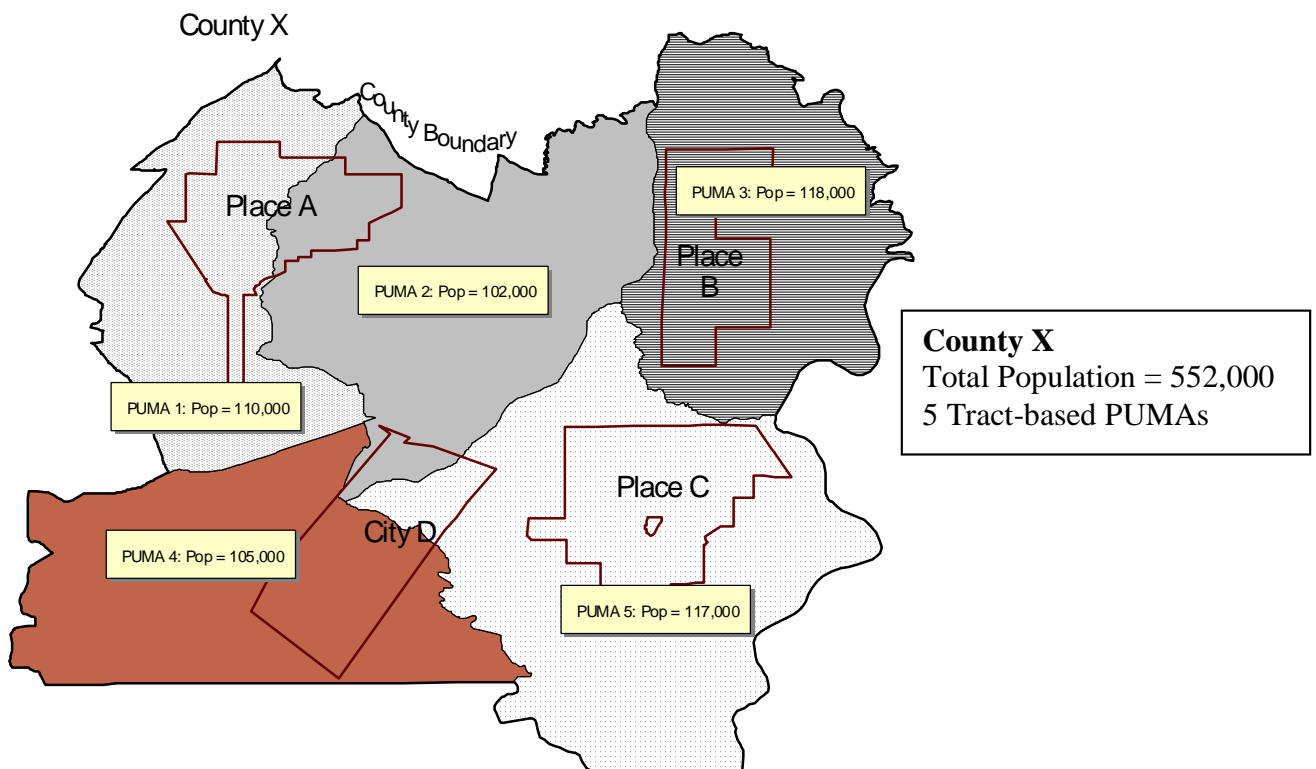


Figure 2: Illustration of Tract-based PUMAs for County X.

It can be seen that for County X, Tract-based boundaries may be better for transportation applications than Place-based boundaries. 5 PUMAs can be defined for County X.



Urbanized Areas (UZs)

- Areas Over 50,000 People**
- Defined by Census Bureau**
- New Process from 1990**
 - Machine Driven**
 - Reproducible**
 - Consistent National Criteria**
 - No Grandfathering**
 - Smoothing Process**
- Two Areas**
 - UA Core (50K or more)**
 - Urban Clusters (2,500 to 49,999)**

Federal Register Notice (March 28th)



American Community Survey (ACS)

- What is it?**
Replacement to Long Form
Continuous Measurement

- What is the Schedule?**
Demonstration 1996 - 1998
Comparison Sites 1999 - 2002
Full Implementation 2003

- Why is it Important Now?**
OMB Committee-Content Justification
Congress is Deciding on Funding
Need to Learn How to Use it

- What Should I Do?**
Start Thinking Beyond the CTPP
How Can You Use ACS?
Tell Us Your Story



Latest Links

Federal Register Notice on the Proposed Criteria to Use for Defining Urbanized Areas

http://www.mcs.com/~berwyned/census/notes/ua_notice032801.pdf

This Paper Explains How to Construct Urban Clusters and Estimate Urbanized Areas Using the Proposed Criteria Noted Above.

<http://www.fhwa.dot.gov/planning/criteria.htm>

Discussion Paper Submitted to OMB Justifying the Journey-to-Work Questions on the Census Long Form and Ultimately the American Community Survey

<http://www.mcs.com/~berwyned/census/articles/030901acs.pdf>

This Site Contains a Method to Transfer the PL-94-171 Data to Your TAZs in a GIS Environment

<http://www.mcs.com/~berwyned/census/products/pl2gis.html>

Census 2000 Results and Issues for New MPOs and TMAs:

<http://www.fhwa.dot.gov/planning/c2000mem.htm>

American Community Survey Information

<http://www.census.gov/CMS/www/>

The TRB Subcommittee on Census Data Web Page

<http://www.mcs.com/~berwyned/census/>

With a Collection of the "Status Report" Newsletters.

April is Now Posted

<http://www.mcs.com/~berwyned/census/newsltr/sr0401.html>



CENSUS TRANSPORTATION PLANNING PACKAGE

VISIT THE WEBSITE

www.mcs.com/~berwyned/census

www.dot.gov/ctpp

CALL THE HOTLINE

202-366-5000

EMAIL THE WORKING GROUP

ctpp@fhwa.dot.gov

JOIN THE LIST SERVE

berwyned@mcs.com



Intermodal Transportation Data Base

Central Access To Transportation Data

- **Download Center** (May 1, 2001)
Currently 25 Data Sets
Growing Daily
- **Mapping Center** (May 15, 2001)
Dot Grants, HPMS
Airline Market Shares
VMT, Grade X-ing Accidents
- **Data Links**
Topical Areas (Freight, Transit, etc.)
BTS Statistics

Check it Out!

<http://www.bts.gov>

